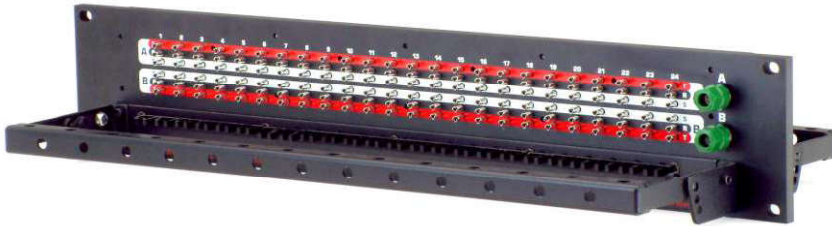


Rapid Punch Terminal Panels

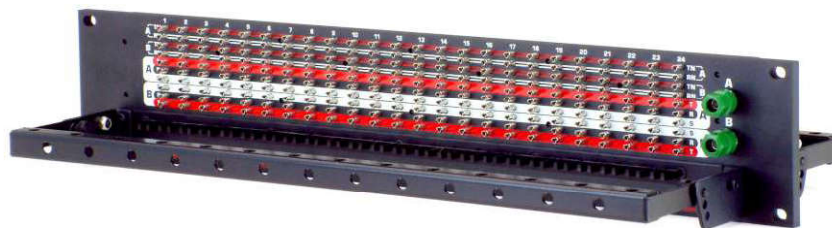
Color-coded and numbered, front and rear!

Rapid Punch Terminal Panels



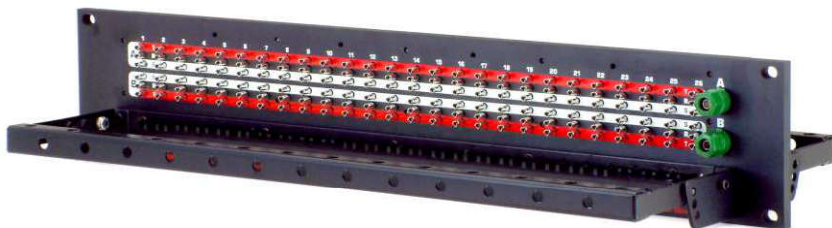
Model RPT48

3.50", 88.14mm panel
48 sets of tip, ring, sleeve
Terminates one 2x24 patchbay
Pivoting cable bar front & rear



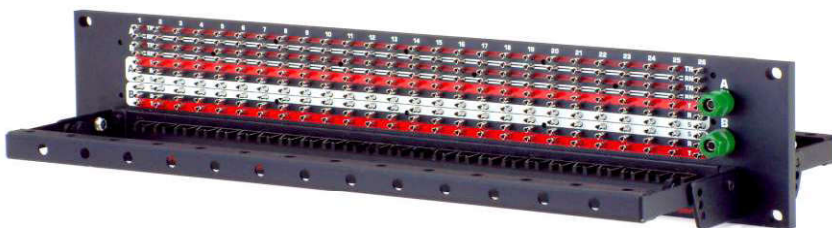
Model RPT48N

3.50", 88.14mm panel
48 sets of tip, ring, sleeve & normals
Terminates one 2x24 patchbay with normals brought out
Pivoting cable bar front & rear



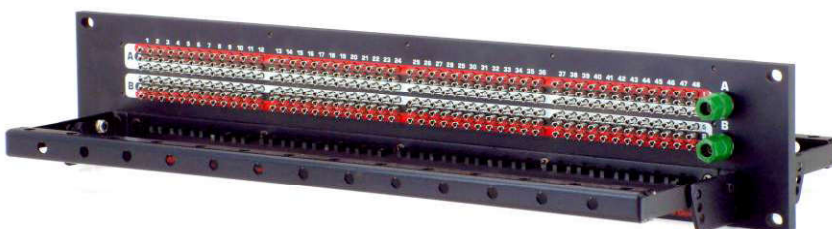
Model RPT52

3.50", 88.14mm panel
52 sets of tip, ring, sleeve
Terminates one 2x26 patchbay
Pivoting cable bar front & rear



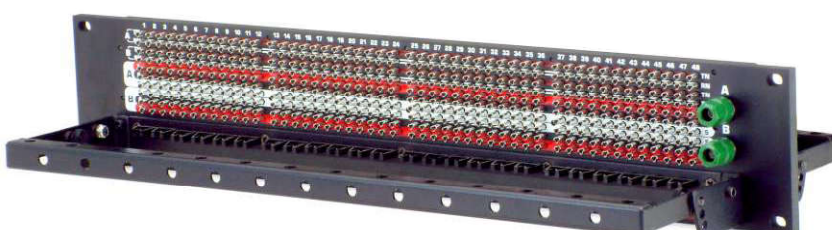
Model RPT52N

3.50", 88.14mm panel
52 sets of tip, ring, sleeve & normals
Terminates one 2x26 patchbay with normals brought out
Pivoting cable bar front & rear



Model RPT96

3.50", 88.14mm panel
96 sets of tip, ring, sleeve
Terminates one 2x48 bantam patchbay
Pivoting cable bar front & rear



Model RPT96N

3.50", 88.14mm panel
96 sets of tip, ring, sleeve & normals
Terminates one 2x48 bantam patchbay with normals brought out
Pivoting cable bar front & rear